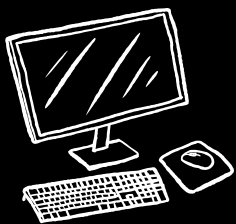


CSMC
PRESENTS

GREP NEWS



OCTOBER 2024

THE COMPUTER SCIENCE DEPARTMENT IS
EXCITED TO WELCOME :

ASSISTANT PROFESSOR LOGAN STAPLETON



PROFESSOR LOGAN STAPLETON IS CURRENTLY A PHD CANDIDATE AT THE UNIVERSITY OF MINNESOTA. THEIR RESEARCH FOCUSES ON USING AI IN CARE WORK AND HOW ALGORITHMS CAN REINFORCE SYSTEMIC OPPRESSION. PROF. STAPLETON'S JOURNEY BEGAN AFTER OBSERVING AT THEIR HOME STATE MINNESOTA'S USE OF AI TO PREDICT CHILDREN'S LIKELIHOOD OF NEGLECT OR JUVENILE DETENTION, A STORY SHARED IN THEIR GUEST LECTURE LAST FALL. WITH A BACKGROUND IN LIBERAL ARTS, ETHICS/PHILOSOPHY, AND MACHINE LEARNING, PROF. STAPLETON BRINGS VALUABLE INSIGHTS TO VASSAR! STOP BY FOR MORE VALUABLE INSIGHTS OR JUST TO SAY HELLO AT SP 104.3!



SELFIES WITH PROF. PETE



SUBMIT HERE:
[HTTPS://TINYURL.COM/4899N7UN](https://tinyurl.com/4899N7UN)

THE CAMPUS RENOWNED SELFIE CONTEST IS BACK, AND ALL CAN PARTICIPATE THE NEXT TIME YOU RUN INTO PROF. PETE, ASK FOR A SELFIE AND SUBMIT IT IN THE LINK BELOW!

WINNERS WILL BE CHOSEN BASED ON CREATIVITY AND WILL RECEIVE A PRIZE



ASSISTANT PROFESSOR JACOB ERICKSON

PROFESSOR JACOB ERICKSON PURSUED A MASTER'S IN COMPUTER SCIENCE AT NORTHEASTERN UNIVERSITY AND A PHD AT STEVENS INSTITUTE OF TECHNOLOGY. HIS RESEARCH FOCUSES ON HOW DIGITAL TECHNOLOGIES INFLUENCE COMMUNICATION AND EMOTIONAL EXPRESSION. HIS JOURNEY BEGAN IN BUSINESS ADMINISTRATION AND ACCOUNTING, WHERE WORKING IN ACCOUNTING AT AMAZON LED TO AN INTEREST IN TECHNOLOGY. HE MENTIONS FOR STUDENTS INTERESTED IN PURSUING COMPUTER SCIENCE TO REMEMBER, "YOU CAN ALWAYS PIVOT AND RECOGNIZE THAT YOUR COMPUTER SCIENCE SKILLS WILL BE VALUABLE ACROSS A WIDE RANGE OF DIFFERENT AREAS AND INTERESTS". BE SURE TO STOP BY FOR MORE VALUABLE INSIGHT OR JUST TO SAY HELLO AT SC 001!

A PORT IN THE STORM



PICTURE THIS...

YOU WALK INTO ASPREY LAB ONE DAY, DESPERATE FOR HELP. YOU HAVE AN ASSIGNMENT DUE AT 11:59, AND YOUR TIC-TAC-TOE BOARD SOMEHOW HAS 13 SQUARES ON IT. YOU SEE A LIGHT AT THE END OF THE TUNNEL, YOUR ONLY HOPE: THE BOARD SAYS THAT "GRACE" HAS COACHING HOURS FOR CMPU-102 FROM 3-5PM. ONLY ONE PROBLEM: WHO IS GRACE?!

YOU SCAN THE LAB AND SEE MULTIPLE PEOPLE WHO MIGHT BE GRACE, HELPING OTHERS IN LOW ENOUGH TONES THAT YOU CAN'T TELL WHICH ONE, IF ANY, ARE ACTUALLY 102 COACHES. YOU'RE SOCIALLY ANXIOUS; YOU DON'T WANT TO LOUDLY ASK THIS LAB FULL OF STRANGERS WHICH ONE IS GRACE. YOU EITHER WASTE 30 MINUTES TRYING TO FIGURE IT OUT BEFORE GETTING HELP, OR TAKE THE L AND GO HOME.

SOUND FAMILIAR? WE AT THE COMPUTER SCIENCE MAJORS COMMITTEE ARE AWARE OF ONE OF THE BIGGEST STRUGGLES THAT COMES WITH GOING TO COACHING HOURS FOR HELP: ACTUALLY IDENTIFYING AND APPROACHING THEM IN THE FIRST PLACE. TO REMEDY THIS AND MAKE SURE COACHES ARE VISIBLE AND ACCESSIBLE TO EVERYONE AT ALL TIMES, WE INTRODUCE: BOATS.



EACH COACH, ALONG WITH WRITING THEIR NAME ON THE WHITEBOARD, WILL PUT A PAPER BOAT ON THEIR MONITOR, MADE BY DAFNE HERE ON THE CSMC, WITH A COLOR THAT CORRESPONDS TO THE CLASS THEY ARE COACHING. THE ASSOCIATIONS FOR THIS SEMESTER ARE AS FOLLOWS:

- CMPU-100: PINK
- CMPU-101: PURPLE
- CMPU-102: GREEN
- CMPU-145: DARK PINK
- CMPU-203: BLUE
- CMPU-331: YELLOW

IF COACHES ARE IN NEED OF A BOAT, THEY CAN BE FOUND AT THE BOAT DOCK NEAR THE PRINTER IN ASPREY. PLEASE USE THE BOATS. WE HOPE THIS INITIATIVE WILL HELP EVERYONE GET THE HELP THEY NEED AS QUICKLY AS POSSIBLE. IF THERE ARE ANY QUESTIONS CONCERNING THE BOATS, PLEASE CONTACT US HERE AT THE CSMC.

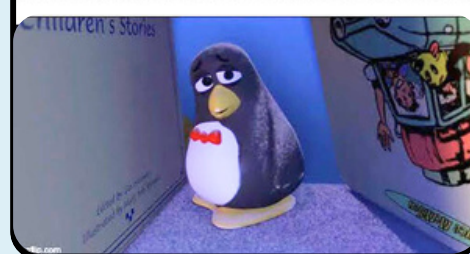
P.S. USING THE BOATS, WE WERE ABLE TO LOCATE GRACE, COACHING A MYSTERIOUS CLASS THAT USES A RED BOAT:



Look at the chart below and say the **COLOR** not the word

YELLOW	ORANGE	BLUE
BLACK	GREEN	RED
YELLOW	PURPLE	RED
ORANGE	GREEN	YELLOW

ME WHEN I CANT FIND MY COACH BECAUSE THEY DIDNT USE A BOAT



GREP: LINUX COMMAND

1. SEARCHES PLAIN TEXT FOR A REGULAR EXPRESSION

FOLLOW OUR INSTA

@VCCSMC

WANT TO ADD TO GREP?

